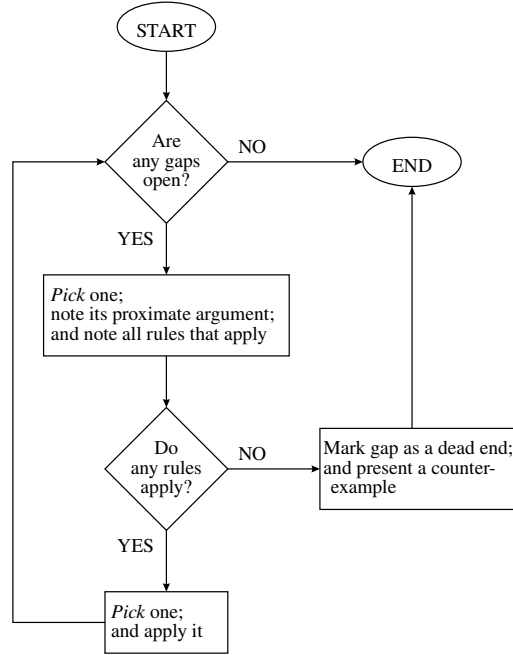


Worksheet on derivations for §3.5

The procedure in outline:



Worksheet for §3.5:

<i>stage</i>	<i>gap</i>	<i>proximate argument & applicable rules</i>	<i>rule used</i>

Rules for closing gaps:

<i>conditions for closing the gap</i>	<i>rule</i>
the goal is among the resources	QED
the goal is \perp , and there are resources ϕ and $\neg \phi$	Nc
the goal is \top	ENV
\perp is a resource	EFQ

Rules for developing gaps:

<i>kind of sentence</i>	<i>rule for resources (i.e., exploitation rule)</i>	<i>rule for goals (i.e., planning rule)</i>
conjunction	Ext	Cnj
negation	CR (when the goal is \perp)	RAA
		IP
atomic sentence	none	
\top or \perp	none	none